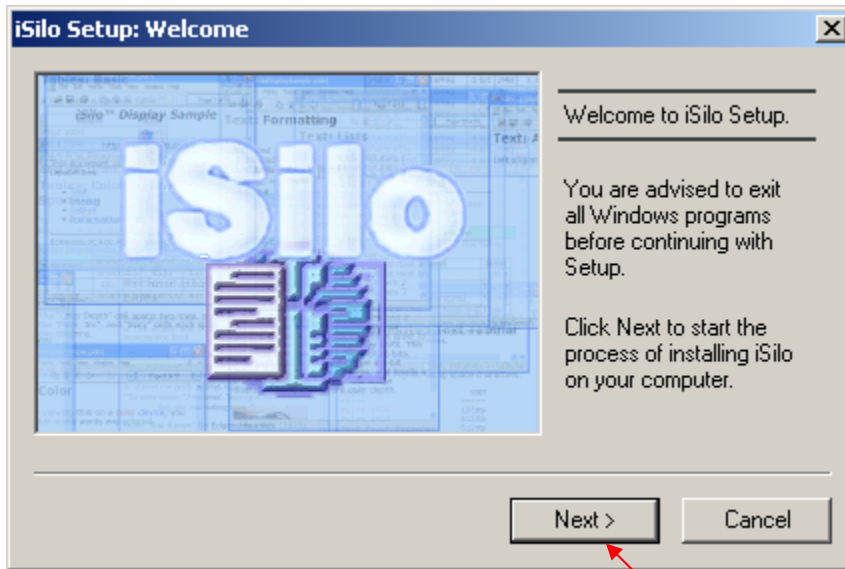


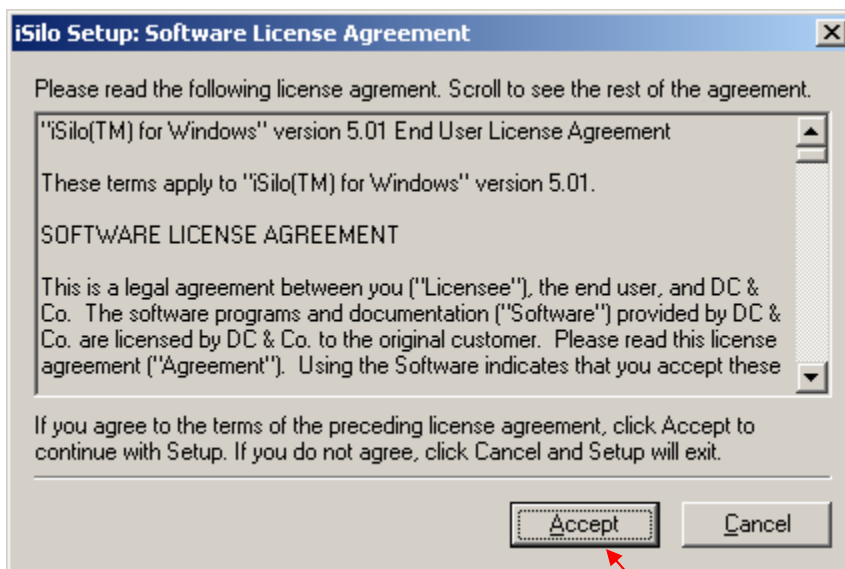
iSilo Software Installation Wizard

1. iSilo Setup Welcome screen, click "Next" button



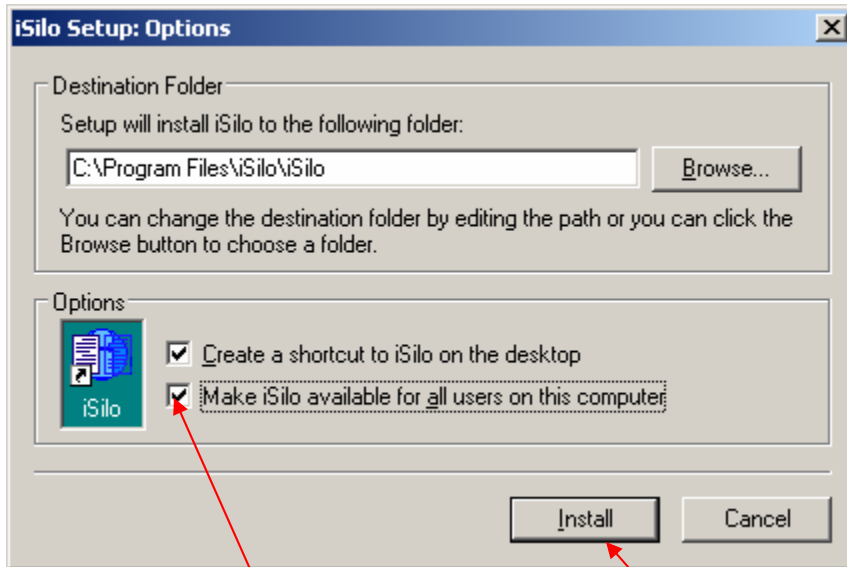
Click "Next"

2. Click "Accept" button



Click "Accept"

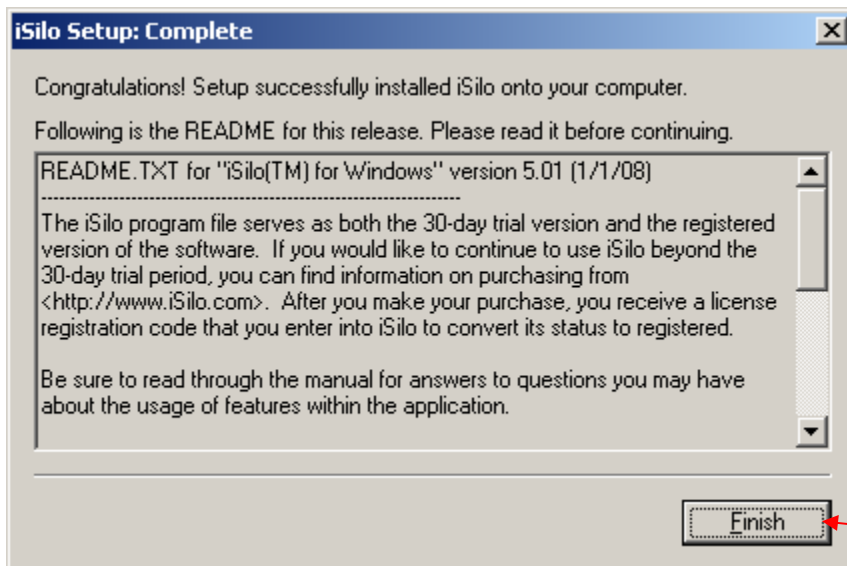
3. Tick check box "Make iSilo available for all..." and then click "Install" button



Tick here

Click "Install"

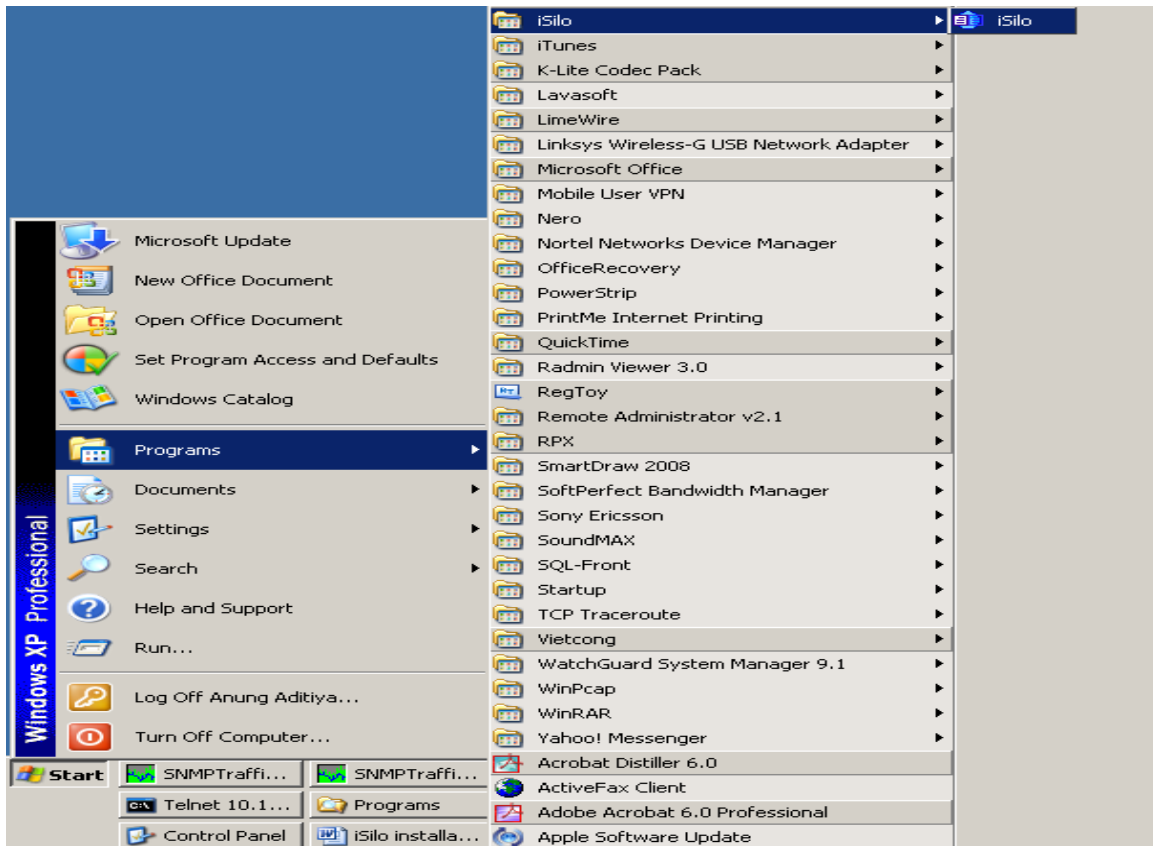
4. Click "Finish" button



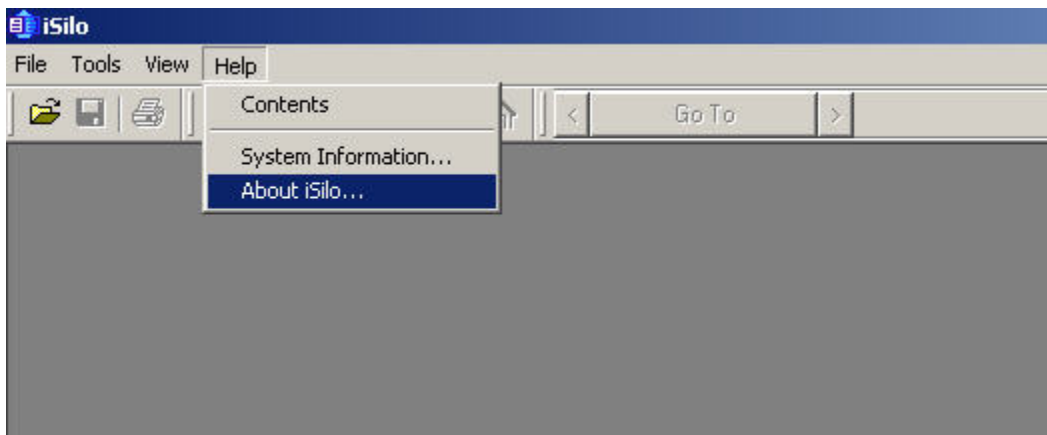
Click "Finish"

iSilo Registration Wizard

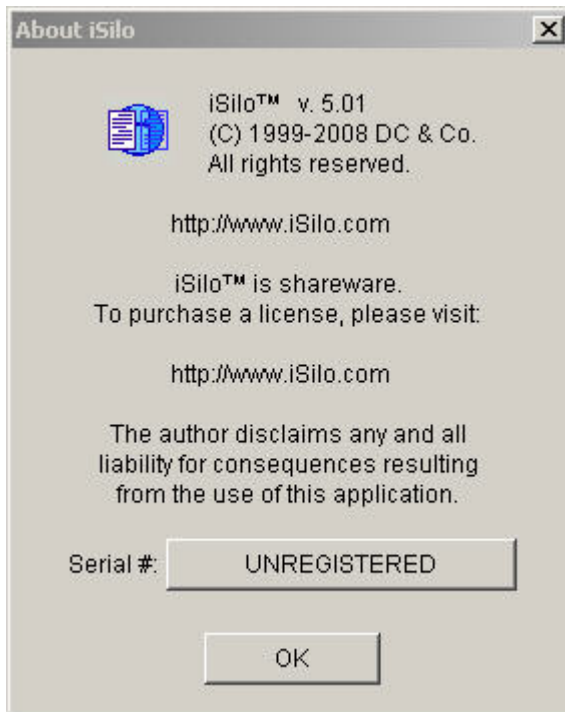
1. Click Start – Program – iSilo.



2. Click "Help" then "About iSilo".



3. "About iSilo" window open shows that the iSilo software still unregistered.



4. Click "Unregistered" button, then enter the registration number on the "Enter license registration code" column (ask ITD Helpdesk for this number).



5. Once you've entered the correct registration number, your iSilo software should status should be like below picture.

